

EDC12-14 (12V 14Ah)

Specifications

Nominal Voltage	12V	
Nominal Capacity(20 Hr)	14Ah	
Dimension	Length	152±1mm(5.98 inches)
	Width	99±1mm(3.90 inches)
	Container Height	96±1mm(3.78 inches)
	Total Height (With terminal)	102±1mm(4.02 inches)
	Approx Weight	Approx. 3.8kgs (8.38 lbs)
Design life	8 years	
Terminal	F2	
Container Material	ABS	
Rated Capacity	14.0Ah/0.36A	(20hr, 1.75V/Cell, 25 °C/77°F)
	13.2Ah/1.32A	(10hr, 1.80V/Cell, 25 °C/77°F)
	12.0Ah/2.40A	(5hr, 1.75V/Cell, 25 °C/77°F)
	9.14Ah/9.14A	(1hr, 1.60V/Cell, 25 °C/77°F)
Max. Discharge Current	210A(5s)	
Internal Resistance	Appro≤15.0mΩ	
Operating Temp. Range	Discharge: -20 °C~50 °C	
	Charge: 0 °C~40 °C	
	Storage: -20 °C~50 °C	
Nominal Operating Temp. Range	25±3 °C(77±5°F)	
Cycle Use	Initial Charging Current Less than 3.78 A. Voltage 14.4V-15.0V at 25 °C(77°F) Temp. Coefficient-20mV/C	
	Standby Use No limit on Intital Charging Current Voltage 13.5V-13.8V at 25 °C(77°F) Temp. Coefficient-20mV/C	
Capacity affected by Temperature	40 °C(104°F)	103%
	25 °C(77°F)	100%
	0 °C(32°F)	86%
Self Discharge	EDC series batteries may be stored for up to 6 months at25 °C(77°F) and then a freshening charge is required. For higher temperatures the time interval will be shorter.	



Application

- ◆ All purpose
- ◆ Uninterruptable Power Supply(UPS)
- ◆ Electric Power System(EPS)
- ◆ Emergency backup power supply
- ◆ Emergency light
- ◆ Railway signal
- ◆ Aircraft signal
- ◆ Alarm and securitysystem
- ◆ Electronic apparatus & equipment
- ◆ Communication power supply
- ◆ DC power supply
- ◆ Auto controlsystem

Constant Current Discharge (Amperes) at 25 °C (77F)

F.V/Time	5min	10min	15min	30min	45min	1h	2h	3h	5h	8h	10h	20h
1.60V	58.0	36.6	26.9	15.97	11.64	9.14	5.78	3.96	2.64	1.77	1.40	0.740
1.67V	54.9	35.1	26.3	15.70	11.45	8.84	5.68	3.88	2.60	1.74	1.38	0.726
1.70V	52.0	33.2	26.0	15.49	11.31	8.56	5.56	3.82	2.54	1.70	1.36	0.714
1.75V	49.6	31.7	24.6	14.98	11.01	8.30	5.46	3.74	2.50	1.69	1.34	0.700
1.80V	45.8	29.5	22.9	14.38	10.65	8.06	5.26	3.60	2.40	1.64	1.32	0.692

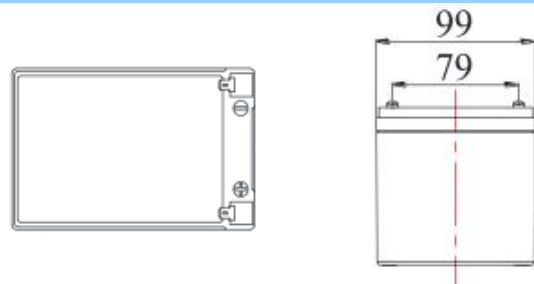
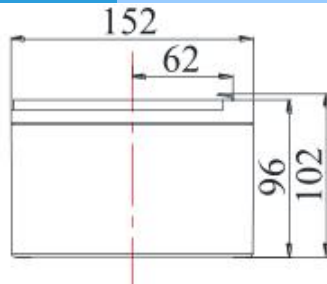
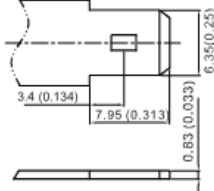
Constant Power Discharge (Watts) at 25 °C (77F)

F.V/Time	5min	10min	15min	30min	45min	1h	2h	3h	5h	8h	10h	20h
1.60V	104.06	70.32	52.00	31.06	22.72	17.98	11.34	7.81	5.23	3.53	2.81	1.476
1.67V	99.72	67.47	51.00	30.62	22.42	17.36	11.14	7.67	5.13	3.49	2.78	1.454
1.70V	95.62	63.82	50.42	30.28	22.20	16.74	10.93	7.52	5.05	3.43	2.76	1.436
1.75V	91.60	60.93	47.84	29.36	21.66	16.12	10.73	7.38	4.94	3.40	2.71	1.406
1.80V	85.40	56.99	44.72	28.28	21.00	15.50	10.30	7.09	4.76	3.31	2.69	1.400

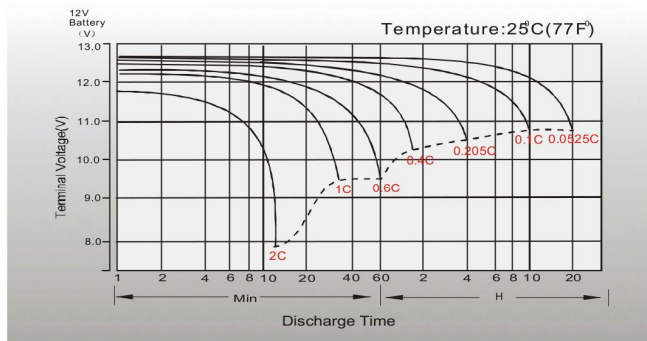
EDC12-14 (12V 14Ah)

Dimensions

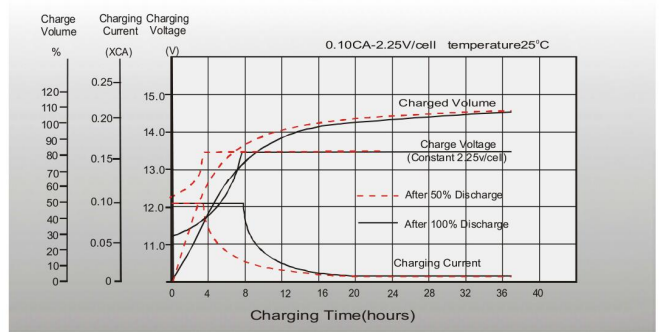
F2 Terminal
Unit: mm [inches]



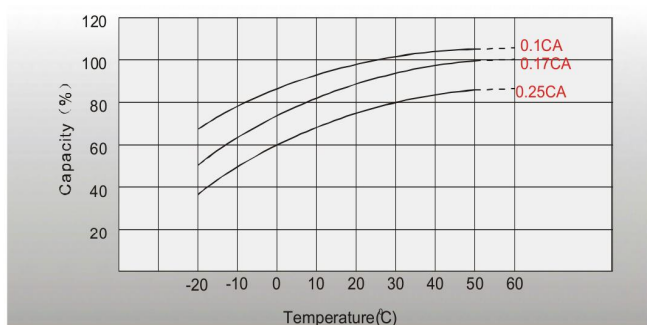
Discharge Characteristics



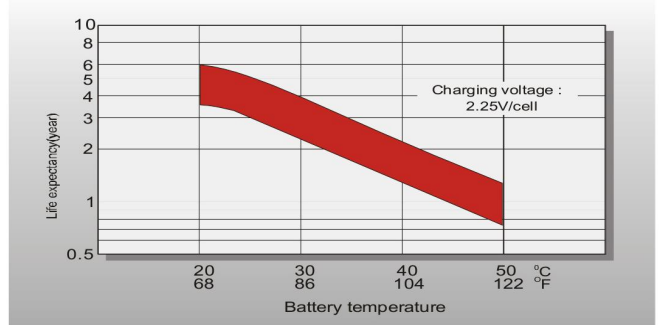
Float Charging Characteristics



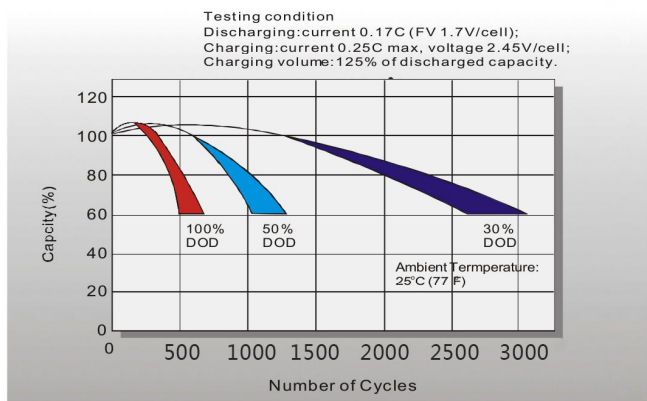
Temperature Effects in Relation to Battery Capacity



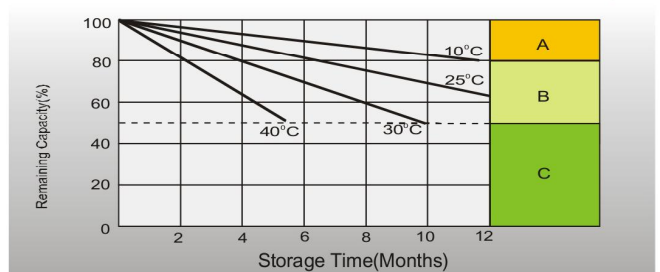
Effect of Temperature on Long Term Float Life



Cycle life in Relation to Depth of Discharge



Self-discharge Characteristics



- A** No supplementary charge required.
(Carry out supplementary charge before use if 100% capacity is required.)
- B** Supplementary charge required before use. Optional charging way as below:
1. Charged for above 3 days at limited current 0.25CA and constant voltage 2.25V/cell.
2. Charged for above 20 hours at limited current 0.25CA and constant voltage 2.45V/cell.
3. Charged for 8-10 hours at limited current 0.05CA.
- C** Supplementary charge may often fail to recover the capacity.
The battery should never be left standing till this is reached.

Specifications subject to change without prior notice.